



Part Time Courses

2022-23

Find a NEW Direction with Derwentside College

Enrolling at Derwentside College

Whether you're looking to progress within your current job role, change your career or enhance your existing skills, Derwentside College has a range of qualifications to set you apart.

How to Enrol

To make arrangements to enrol, please telephone us on **01207 585900** or make an enquiry to **enquiries@derwentside.ac.uk**

Course Fees

You will find details of course fees throughout this leaflet. If you are unemployed or in receipt of certain benefits, you may be eligible for free tuition.

We define a learner as unemployed if one or more of the following apply, you:

- receive Jobseeker's Allowance (JSA), including those receiving National Insurance credits only
- receive Employment and Support Allowance (ESA)
- receive Universal Credit, and your take-home pay as recorded on your Universal Credit statement (disregarding Universal Credit payments and other benefits) is less than £345 a month, or £552 a month if you have a joint benefit claim with your partner.

You will also find a number of course fees throughout this leaflet are **FREE** which depends on your Age and Qualification. Please ask for further details at the time of enrolment.

Full Payment Courses

Some courses are not fundable and therefore you will need to pay for these courses in full.

These courses are marked with **FP**

How to Pay

You can pay by cash or debit/credit card. Some courses can be paid for via monthly instalments. Please ask for further details.

If your employer has agreed to pay your fees, you will need written confirmation from your employer when you enrol.

Financial Support

Financial support may be available for eligible learners. The **Learner Support Fund** can assist you with travel to college, books, specialist clothing and equipment. In addition, daytime students can be assisted with meals and childcare support.

To enquire if you qualify or to find out how to apply for financial support, please contact the Finance Team on **01207 585900**.

Low Wage Fee Remission

Adults who earn less than £18,525 annual gross salary may be entitled to FREE tuition on funded courses. Please ask for further details at the time of enrolment.

If you are eligible for FREE tuition as part of the Low Wage entitlement, you will need to supply us with some supporting evidence when you enrol.

Don't miss out, claim your entitlement now.

Level 3 Courses for Adults

If you are aged 19 or over and applying to study at Level 3, you could be eligible for a student loan or a FREE course via the Government's Free Courses For Jobs.

Advanced Learner Loan

An Advanced Learner Loan covers the cost of your course fees and is easy to apply for. It doesn't take your household income into account and doesn't involve a credit check. Repayments are linked to what you earn and not how much you borrowed.

You only have to start making repayments when you've finished your course and you're earning over £27,295 a year. Until then you don't need to repay anything.

If you receive a loan to study for an Access to HE course and complete it and move onto an HE course, your loan for your Access course will be written off once you also complete your HE qualification.

To apply for an Advanced Learner Loan visit www.gov.uk/advanced-learner-loan or call 0300 100 0619

The College will provide you with the course information you need to complete your application.

Courses marked with **L** are eligible for an Advanced Learner Loan



Free Course for Jobs

As part of the Government's **Lifetime Skills Guarantee**, a targeted Level 3 adult offer has been developed to support adult learners, without an existing full Level 3 qualification, to train and gain valuable skills at Level 3 to improve their job prospects.

From April 2022, adults aged 19 and over who meet the definition of 'low wage' or 'unemployed' are now able to access a selection of our Level 3 courses for FREE. **Please check at the time of enrolment.**

If you would like to find out more, please email: enquiries@derwentside.ac.uk or call 01207 585900.



ACCESS TO HIGHER EDUCATION

Change your life with an Access to HE Diploma

If you want to gain a degree, but don't have the right qualifications, an Access to Higher Education Course could be the perfect stepping stone.

Our learners progress onto a wide range of degrees including Nursing (Children's/Adult/Mental Health/Learning Disabilities), Midwifery, Paramedic Science, History, English, Social Work, Education/Teaching, Childhood/Early Years Studies, Psychology, Sociology, Law and Criminology amongst others.

Choose either our Daytime or Evening Course

Access to HE - DAYTIME

Access to HE Diploma in

- Health
- Humanities & Social Science
- Education

Starts Monday 12 September

3.5 days a week for 33 Weeks

Days to be confirmed at interview

Entry requirements: Maths and English assessment.

Access to HE - EVENING

Access to HE Diploma in Health

Starts Tuesday 13 September

Tuesday & Thursday

5pm-8pm, for 33 Weeks

Entry requirements: GCSE in Maths and English at grade C or above or an equivalent Level 2.

Progress to Uni and your loan will NOT need to be repaid



YOUR COURSE COULD BE FREE - Depending on age and qualification.

Course Fee - £3,384 or £3,022 for the Humanities & Social Science Pathway.
Find out more about Advanced Learner Loans - www.gov.uk/advanced-learner-loan



PART OF **noan** GROUP

Barbering	Day(s)	Time	Duration	Start Date	Course Fee
Level 2 Certificate in Barbering	Tues	1.00pm - 6.30pm	36 Weeks	20 Sep	FREE

Beauty Therapy	Day(s)	Time	Duration	Start Date	Course Fee
Level 2 Certificate in Beauty (Manicure, Pedicure, Facials)	Mon & Tues	9.00am - 5.30pm 1.00pm - 7.30pm	14 Weeks	5 Sep	FREE
Level 3 Certificate in Beauty (Massage)	Wed	1.00pm - 5.00pm	36 Weeks	7 Sep	£1,645
Brow Lamination	Wed	5.30pm - 8.30pm	1 Day	5 Oct	£45
Definition Brows	Wed	5.30pm - 8.30pm	1 Day	23 Nov	£45
Level 2 Certificate in Nail Technology	Mon	9.00am - 1.00pm	9 Weeks	9 Jan	FREE
Gel Polish	Wed	5.30pm - 9.00pm	1 Day	1 Feb	£45

L

FP

FP

FP

Catering & Hospitality	Day(s)	Time	Duration	Start Date	Course Fee
Level 2 Diploma in Professional Cookery	Wed	9.30am - 3.15pm	36 Weeks	21 Sep	FREE
Level 2 Diploma in Food and Beverage	Wed	9.30am - 3.15pm	36 Weeks	21 Sep	FREE
Level 3 Diploma in Professional Cookery	Wed	9.30am - 3.15pm	36 Weeks	21 Sep	£3,345
Level 3 Hospitality Supervision and Leadership	Wed	9.30am - 3.15pm	36 Weeks	21 Sep	£2,583
Christmas Cake Decorating	Tues	5.30pm - 9.00pm	1 Day	8 Nov	£45
Italian Christmas Cookery	Tues	5.00pm - 9.00pm	1 Day	29 Nov	£50

L

L

FP

FP

Construction/Building Services	Day(s)	Time	Duration	Start Date	Course Fee
Introduction to Construction Skills	Wed, Thurs & Fri	9.30am - 3.00pm	4 Weeks	21 Sep	FREE
Renovate Don't Relocate – Level 1 Award in Construction Skills including: Joinery/Plastering/Painting/Brickwork	Thurs	6.00pm - 8.30pm	14 Weeks	22 Sep	FREE

L

Advanced Learner Loan

FP

Full Payment

Engineering	Day(s)	Time	Duration	Start Date	Course Fee
Level 1 Award in Welding Skills	Tues	5.30pm - 8.30pm	20 Weeks	20 Sep	£650
The Level 1 Award in Welding is ideal if you are new to welding, metal fabrication, and want to gain knowledge and practical experience.					
Level 2 Award in MIG Welding Skills	Tues	5.30pm - 8.30pm	20 Weeks	20 Sep	£650
18th Edition Wiring Regulations	Tues	5.30pm - 7.30pm	10 Weeks	20 Sep	£450
18th Edition Wiring Regulations UPDATE	Thurs	9.00am - 6.00pm	1 Day	22 Sep	£150
The 1 Day 18th Edition course is aimed at practising electricians who need to update and enhance their understanding of the IET Wiring Regulations. You must have completed the 17th Edition Qualification.					

FP

FP

English as a Second Language	Day(s)	Time	Duration	Start Date	Course Fee
ESOL for people who speak English as a second language	Mon	1.00pm - 3.00pm	34 Weeks	12 Sep	FREE
ESOL for people who speak English as a second language	Fri	9.00am - 12noon	34 Weeks	16 Sep	FREE

Maths & English	Day(s)	Time	Duration	Start Date	Course Fee
GCSE Maths*	Tues	5.30pm - 8.30pm	31 Weeks	20 Sep	FREE
GCSE English*	Thurs	5.30pm - 8.30pm	31 Weeks	22 Sep	FREE
<p>* Learners will need to complete an Initial Assessment before they start the course. Initial Assessment will be held w/c 12th September or at a date to suit individual requirements.</p> <p>Please note: Failure to attend the exam will result in a £60 charge. Additionally, if you already have a Grade A-C or 4 and above, the cost will be £811 per GCSE.</p>					
Enhance your Maths Skills	Tues	5.30pm - 7.30pm	16 Weeks	20 Sep	FREE
Enhance your English Skills	Thurs	5.30pm - 7.30pm	16 Weeks	22 Sep	FREE
Pathways English and Maths	Tues, Wed & Thurs Fri	9.30am - 12noon 9.30am - 2.30pm	16 Weeks	20 Sep	FREE

Teaching and Education	Day(s)	Time	Duration	Start Date	Course Fee
CACHE Level 2 Certificate in Supporting Teaching and Learning in Schools	Wed	9.30am - 12noon	36 Weeks	21 Sep	FREE
C&G Level 3 Diploma in Specialist Support for Teaching and Learning in Schools	Wed	9.30am - 12noon	36 Weeks	21 Sep	£2,225
CACHE Level 2 Diploma in Early Years Practitioner	Fri	9.30am - 12noon	36 Weeks	23 Sep	FREE
CACHE Level 3 Diploma for the Early Years Workforce (Early Years Educator)	Fri	9.30am - 12noon	36 Weeks	23 Sep	£2,882 (2 years)
All the above Teaching and Education courses will be delivered in a workshop format					

L

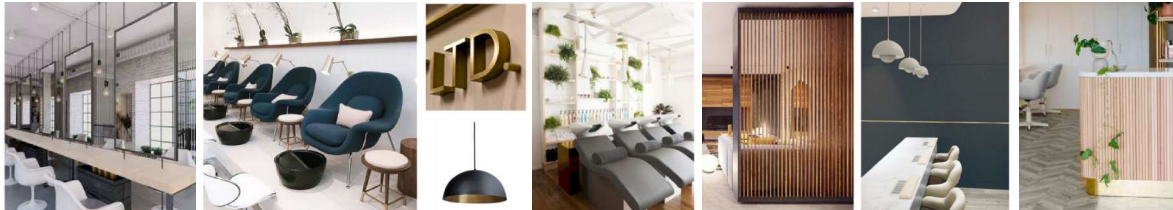
L

Wellbeing and Health Short Courses	Course Fee
Learners studying on these programmes will need to commit up to 3 hours per week for a period of up to 16 weeks	
Induction Session - Tuesday 20 September, 4.30pm - 6.30pm with monthly joining points.	
Level 2 Certificate in Awareness of Mental Health Problems	FREE
Level 2 Certificate in Understanding Behaviour that Challenges	FREE
Level 2 Certificate in Understanding Nutrition and Health	FREE
Upon completion and following discussion with the tutor, learners may progress onto further courses.	



NEW Hair & Beauty Salons Opening in September

Following a significant investment and refurbishment, our amazing new facility will provide our **Hairdressing and Beauty Therapy Students** with access to the latest state of the art facilities. We will also be taking bookings from September for a range of treatments at an excellent cost.



Newly Refurbished Restaurant **NOW OPEN**

STEEL
HOUSE
BISTRO



Steel House Bistro is the brand NEW College Restaurant.
Join us for a completely unforgettable dining experience you will remember.
Book for September at steelhousebistro@derwentside.ac.uk or call 01207 585930

Derwentside College, Front Street, Consett, County Durham, DH8 5EE

Telephone: 01207 585900 Email: enquiries@derwentside.ac.uk

www.derwentside.ac.uk